



Nothing but **HEAVY DUTY.**



DESIGNED TO A HIGHER STANDARD

TEST INSTRUMENTS CATALOG





MILWAUKEE® TEST INSTRUMENTS

When it comes to test instruments, there isn't an expert out there who knows what works better than you. Milwaukee® has a proven track record of getting out in the field to understand the demands of a constantly changing workplace. By working with our users, we're designing instruments that make you more productive and help you be the best at what you do.

DESIGNED TO A HIGHER STANDARD

Milwaukee® offers a comprehensive line of Test and Measurement tools built specifically for you. Everything from our high-contrast white on black displays, to our built-in work light and voltage detection, to our rugged over-molding is designed to make your job easier. Milwaukee® also offers a rechargeable system for test instruments, powered by our M12™ REDLITHIUM™ battery.

Built to last, Milwaukee® Test and Measurement tools are backed by the Milwaukee® 5 Year Warranty.

**BY THE TRADE
FOR THE
TRADE**



Nothing but **HEAVY DUTY.**

Table of Contents

THERMAL IMAGING

2260-21	M12™ 160x120 Thermal Imager	8
---------	-----------------------------	---

FORK METERS

2205-20	Fork Meter	10
2206-20	Fork Meter for HVAC/R	11

CLAMP METERS

2231-20	Milliamp Clamp Meter	12
2235-20	400 Amp Clamp Meter	13
2237-20	Clamp Meter	14
2236-20	Clamp Meter for HVAC/R	15

DIGITAL MULTIMETERS

2216-20	Digital Multimeter	16
2217-20	Digital Multimeter	17
2220-20	Electrical Combo Kit	18

VOLTAGE DETECTORS

2202-20	Voltage Detector with LED	19
2200-20	Voltage Detector	19

TEMPERATURE METERS

2265-20	LASER TEMP-GUN™ Thermometer	20
2266-20	LASER TEMP-GUN™ Thermometer	21
2276-21	LASER TEMP-GUN™ M12™ Cordless Thermometer	22
2277-21	LASER TEMP-GUN™ M12™ Cordless Thermometer for HVAC/R	23
2270-20	Contact Temp Meter	24

LIGHTING TESTER

2210-20	Fluorescent Lamp & Ballast Tester	25
---------	-----------------------------------	----

INSPECTION AND DETECTION

2311-21	M-SPECTOR™ AV M12™ Cordless Multimedia Camera Kit (17mm)	26
2312-21	M-SPECTOR™ AV M12™ Cordless Multimedia Camera Kit (9.5mm)	26
2313-21	M-SPECTOR 360™ Rotating Inspection Scope	27
2314-21	M-SPECTOR 360™ 9 ft Rotating Inspection Scope KIT	28
2291-21	SUB-SCANNER™ M12™ Cordless Detection Tool Kit	29
2280-20	Laser Distance Meter	30

INSTRUMENT ACCESSORIES

M-SPECTOR™ Accessories	31
Accessory and Meter Cases	32
Electrical Accessories	33
Temperature Accessories	33

Hand Tools	34
------------	----

Factory Service Centers	35
-------------------------	----

INCREASED PRODUCTIVITY

Carry Fewer Tools



Built-in LED Light



Built-in Voltage Detector

Easy to Use



Easy-to-Read White on Black Display



Trade-Specific Feature Sets

Built Tough



Rugged Over-Molding

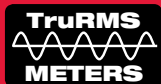


5 Year Warranty



Nothing but **HEAVY DUTY.**

BEST IN CLASS DURABILITY AND SAFETY



Protection Against Dust

Totally protected
against dust

6

Protected against dust
(No harmful deposit)

5

Protected against
objects over 1mm
(Tools / Small Wire)

4

Protected against
objects over 2.5mm
(Tools / Wire)

3

Protected against
objects over 12mm
(Fingers)

2

Protected against
objects over 50mm
(Hands)

1

No protection

0

Ingress Protection Ratings



Protection Against Moisture

Protected against low
pressure jets of water
from all directions
(Limited ingress permitted)

5

Protected against
water sprayed from
all directions (Limited
ingress permitted)

4

Protection against
sprays to 60°
from the vertical

3

Protection against direct
sprays of water up to 15°
from the vertical

2

Protection against
vertically falling
drops of water

1

0 No protection

OUTSTANDING VALUE

MILWAUKEE® SOLUTION



TOTAL INVESTMENT
\$229⁰⁰

COMPETITIVE SOLUTION



$\$292^{00} + \$34^{05} + \$35^{15}$

TOTAL INVESTMENT
\$361²⁰

MILWAUKEE® SOLUTION



TOTAL INVESTMENT
\$448⁰⁰

COMPETITIVE SOLUTION



$\$463^{75} + \$84^{95} + \$35^{15}$

TOTAL INVESTMENT
\$583⁸⁵



Nothing but **HEAVY DUTY.**

M12™ 160x120 Thermal Imager

2260-21

NIST #: 2260-21NST

SPECIFICATIONS

Thermal Resolution	160 x 120 Pixels
Temperature Range	14°F to 662°F (-10°C to 350°C)
Software	YES
Thermal / Visual Display	Thermal or Visual, Toggle Dedicated Key
Removable Battery	YES
Battery Charge Time	30 minutes
Battery Life	> 4 Hours
Storage Size / Type	2GB SD Card
LED Flashlight	YES
Tool Warranty	5 Year

Includes

- 2260-21 M12™ 160x120 Thermal Imager,
- 48-11-2401 M12™ REDLITHIUM™ Battery,
- 48-59-2401 M12™ Lithium-ion Battery Charger,
- 2GB SD Card, SD Card Reader, Thermal Imager Manual, Thermal Imager Report Software, USB Cable, Carrying Case, Quick Reference Guide, Manual

NIST



Broader temperature range
(-10°C to 350°C)
to cover more applications

Rugged over-molding
protects the large LCD
and camera lenses if
dropped

Crisp, high resolution
160 x 120 pixel
thermal images

Simple screen layout
allows you to focus
on getting the
best images

Built-in visual camera and flashlight
for improved analysis

Capture thermal and visual images
on each trigger
pull for enhanced
reporting

Rugged over-molding
for increased
durability and grip

Ergonomic pistol grip design
for ease of use

M12

Rechargeable REDLITHIUM™ battery pack
provides 4 hours of
continuous run-time



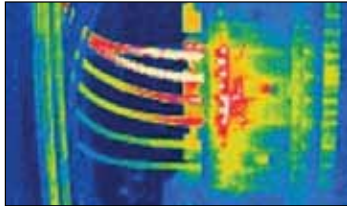
FASTER

- Toggle button easily switches the LCD between a thermal and visual image
- PC software allows you to quickly analyze images and rapidly create reports



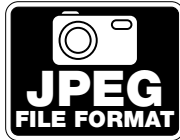
MORE VERSATILE

- Broad temperature range (14°F to 662°F) to cover more applications
- Crisp, high resolution 160 x 120 pixel Thermal images for better definition and clarity



EASIER TO USE

- Intuitive key pad layout is perfect even for infrequent users
- All thermal and visual images saved in standard JPEG format for use in any program



To request your own in-person demonstration
or for more information:

- Visit milwaukeetool.com/thermal-imaging
- Call 855-653-8665
- Or scan this QR code



Nothing but **HEAVY DUTY.**

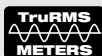
Fork Meter

2205-20

NIST #: 2205-20NST

SPECIFICATIONS ELECTRICAL

Current AC	200A
Fork Opening	0.63"
TRMS	YES
Safety Rating	CAT IV 600V / CAT III 1000V
Voltage AC/DC	1000V
Lo-Z Measurement	YES
Resistance	40 MΩm
Continuity	Audible
Display Backlight	YES
Display Type	White on Black LCD
Non-contact Voltage	YES
LED Work Light	YES
Rugged Over-Molding	YES
Warranty	5 Years
Includes	Fork Meter, (1) Test Lead Set, (2) AA Batteries, Manual

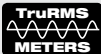


Fork Meter for HVAC/R

2206-20
NIST #: 2206-20NST

SPECIFICATIONS HVAC

Current AC	200A
Fork Opening	0.63"
TRMS	YES
Safety Rating	CAT IV 600V / CAT III 1000V
Microamps DC	1,000µA
Voltage AC/DC	1000V
Resistance	40 MOhm
Continuity	Audible
Capacitance	1,000µF
Contact Temperature	-40°F to 752°F (-40°C to 400°C)
Display Backlight	YES
Display Type	White on Black LCD
Non-contact Voltage	YES
LED Work Light	YES
Rugged Over-Molding	YES
Warranty	5 Years
Includes	Fork Meter for HVAC/R, (1) Test Lead Set, (1) Thermocouple (Dual Banana), (2) AA Batteries, Manual



NIST





Nothing but **HEAVY DUTY.**

Milliamp Clamp Meter

2231-20

NIST #: 2231-20NST

SPECIFICATIONS

ELECTRICAL

Milliamp DC Range	0 to 99
4-20mA Resolution	0.01mA
Max Conductor Size	0.23"
Clamp Wire Length	3.5"
Display Type	High-Contrast White on Black
LED Work Light	YES
Rugged Over-Molding	YES
Warranty	5 Years
Includes	Milliamp Clamp Meter, carrying case, (2) AA Batteries, Manual



NIST



Secure storage pocket protects clamp when not in use

High-contrast resolution white on black display for easy viewing in all lighting conditions

Long clamp wire makes measuring easier

Narrow jaw profile for easily clamping around wires in tight spaces



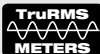
400 Amp Clamp Meter

2235-20

NIST #: 2235-20NST

SPECIFICATIONS ELECTRICAL

TRMS	YES
Jaw Size	1"
Safety Rating	CAT III 600V
Current AC	400A
Voltage AC/DC	600V
Resistance	400 ohm
Continuity	Audible
HOLD	YES
Display Backlight	YES
Display Type	Standard LCD
LED Work Light	YES
Rugged Over-Molding	YES
Warranty	5 Years
Includes	400 Amp Clamp Meter, (1) Test Lead Set, (2) AA Batteries, Manual



NIST





Nothing but **HEAVY DUTY.**

Clamp Meter

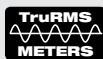
2237-20

NIST #: 2237-20NST

SPECIFICATIONS ELECTRICAL

Jaw Size	1.3"
TRMS	YES
Safety Rating	CAT III 600V
Current AC/DC	600A
Voltage AC/DC	600V
Frequency	10 kHz
Resistance	6 kOhms
Continuity	Audible
Capacitance	4000 μ F
Display Backlight	YES
Display Type	White on Black LCD
Non-contact Voltage	YES
LED Work Light	YES
Rugged Over-Molding	YES
Warranty	5 Years

Includes Clamp Meter, (1) Test Lead Set, (2) AA Batteries, Manual



NIST



Large jaw opening
easily handles wire bundles

Thin jaw profile
for access to tight spaces

Built-in LED work light
lights the work area

Built-in non-contact voltage detector

Simplified user interface and feature set
specifically tailored to the electrician

Side-mounted dial
for one-handed use

High-contrast, easy-to-read display
provides clearer readings

Rugged over-molding
for increased durability and grip

AA batteries included

Test lead inputs



Clamp Meter for HVAC/R

2236-20
NIST #: 2236-20NST

SPECIFICATIONS

HVAC

Jaw Size	1.3"
TRMS	YES
Safety Rating	CAT III 600V
Current AC	600A
Microamps DC	600µA
Voltage AC/DC	600V
Resistance	6 kOhms
Continuity	Audible
Capacitance	4000µF
Contact Temperature	-40°F to 752°F (-40°C to 400°C)
Display Backlight	YES
Display Type	White on Black LCD
Non-contact Voltage	YES
LED Work Light	YES
Rugged Over-Molding	YES
Warranty	5 years
Includes	Clamp Meter for HVAC/R, (1) Test Lead Set, (1) Thermocouple (Dual Banana), (2) AA Batteries, Manual





Nothing but **HEAVY DUTY.**

Digital Multimeter

2216-20

NIST #: 2216-20NST

SPECIFICATIONS

TRMS	YES
Safety Rating	CAT III 600V
Voltage AC	6.00mV – 600V
Voltage DC	600.0mV – 600V
Frequency	2.00 Hz – 50.00 kHz
Resistance	40 MOhm
Continuity	Audible
Capacitance	1000µF
Current AC/DC	10.00A
Display Backlight	YES
Display Type	Standard LCD
HOLD / MIN / MAX	YES
Bargraph	YES
Rugged Over-Molding	YES
Accessory Attachment	Magnetic Meter Holder
Warranty	5 Years
Includes	Digital Multimeter, (1) Test Lead Set, (2) AA Batteries, Manual



Slide rail for mounting accessories

High-contrast, easy-to-read display provides clearer readings

Side-mounted dial for one-handed use

Simplified user interface and feature set for the electrician and the HVAC technician

Rugged over-molding for increased durability and grip

AA batteries included



Magnetic Meter Holder 49-77-3001



Digital Multimeter

2217-20
NIST #: 2217-20NST

SPECIFICATIONS

TRMS	YES
Safety Rating	CAT III 600V
Voltage AC	6.00mV – 600V
Voltage DC	600.0mV – 600V
Lo-Z Measurement	YES
Frequency	10 Hz – 50.00 kHz
Resistance	40 MOhm
Continuity	Audible
Capacitance	1000µF
Current AC/DC	10.00A
Contact Temperature	-40°F to 752°F (-40°C to 400°C)
Display Backlight	YES
Display Type	White on Black LCD
HOLD / MIN / MAX	YES
Bargraph	YES
Rugged Over-Molding	YES
Accessory Attachment	Magnetic Meter Holder
Warranty	5 Years
Includes	Digital Multimeter, (1) Test Lead Set, (1) Thermocouple (Dual Banana), (2) AA Batteries, Manual



Slide rail for mounting accessories

White on black high-contrast, easy-to-read display provides clearer readings

Side-mounted dial for one-handed use

Simplified user interface and feature set for the electrician and the HVAC technician

Rugged over-molding for increased durability and grip

AA batteries included



Magnetic Meter Holder 49-77-3001





Nothing but **HEAVY DUTY.**

Electrical Combo Kit

2220-20

Includes

2217-20 Digital Multimeter,
2202-20 Voltage Detector
with LED, 48-22-1901
FASTBACK™ Utility
Knife, 48-22-2114
11in1 Screwdriver,
49-77-3001 Magnetic
Meter Holder, 48-55-0175
Meter Case, Electrical Test
Lead Set, Dual Banana
Thermocouple, Batteries
Included



Digital Multimeter 2217-20

See page 17 for
more information



Voltage Detector with LED

2202-20
See page 19 for
more information



Easy blade
change

Up to 3X faster
blade opening

Gut hook
for cutting
while closed



FASTBACK™ Utility Knife
48-22-1901



11in1
screwdriver
with patented
ECX™ bit

Can bend up to
12 gauge wire

Can strip up to
12 gauge wire



**11in1
Screwdriver**
48-22-2114

Voltage Detector with LED

2202-20

SPECIFICATIONS

Voltage Range	50 to 1000V AC
Safety Range	CAT IV 1000V
Audible Indicator	YES
Green "ON" Indicator	YES
On / Off Button	YES
LED Work Light	YES
Battery	2 AAA
Warranty	1 year
Includes	Voltage Detector with LED, (2) AAA Batteries



Tip for checking outlets

Built-in LED light
(2202-20 only)

Green light
indicates tool is on

Blinking red light
indicates voltage

Loud beeper
indicates voltage

Pocket clip for
easy storage

On / Off button

Voltage Detector

2200-20

SPECIFICATIONS

Voltage Range	50 to 1000V AC
Safety Range	CAT IV 1000V
Audible Indicator	YES
Green "ON" Indicator	YES
On / Off Button	YES
Battery	2 AAA
Warranty	1 year
Includes	Voltage Detector, (2) AAA Batteries





Nothing but **HEAVY DUTY.**

LASER TEMP-GUN™ Thermometer

2265-20

NIST #: 2265-20NST

SPECIFICATIONS

Temperature Range	-22°F to 662°F (-30°C to 350°C)
Distance to Spot Ratio	10 to 1
Basic Accuracy	1.50%
Repeatability	0.50%
Display Resolution	0.1°F (0.1°C)
Response Time	<500 mS
Emissivity	0.95
HOLD / MAX	YES
Display Backlight	YES
Display Type	Standard LCD
ALARM (HI / LO)	YES
Rugged Over-Molding	YES
Warranty	5 Years

Includes LASER TEMP-GUN™,
(3) AA Batteries, Manual

NIST



10:1 distance to spot ratio measures a 1" spot from 10' away

Rugged over-molding for increased durability and grip

AA batteries included



LASER TEMP-GUN™ Thermometer

2266-20
NIST #: 2266-20NST

SPECIFICATIONS

Temperature Range	-22°F to 932°F (-30°C to 500°C)
Distance to Spot Ratio	12 to 1
Basic Accuracy	1.50%
Contact Temperature Input	-22°F to 842°F (-30°C to 450°C)
Repeatability	0.50%
Display Resolution	0.1°F (0.1°C)
Response Time	<500 mS
Emissivity	0.95
HOLD / MAX	YES
Display Backlight	YES
Display Type	White on Black LCD
ALARM (HI / LO)	YES
Rugged Over-Molding	YES
Warranty	5 Years
Includes	LASER TEMP-GUN™, (3) AA Batteries, Manual





Nothing but **HEAVY DUTY.**

LASER TEMP-GUN™ M12™ Cordless Thermometer

2276-21

NIST #: 2276-21NST

SPECIFICATIONS ELECTRICAL KIT

Temperature Range	-22°F to 1472°F (-30°C to 800°C)
Basic Accuracy	1.50%
Distance to Spot Ratio	40 to 1
Contact Temperature	-40°F to 1022°F (-40°C to 550°C)
Display Resolution	0.1°F (0.1°C)
Response Time	<500 ms
Emissivity	Adjustable 0.10 to 1.00
MIN / MAX / AVG / DIF	YES
Data Storage	YES, 20 Points
Alarm (HI / LO)	YES
Locking Trigger	YES
Display Backlight	YES
Display Type	White on Black LCD
LED Flood Light	YES
Rugged Over-Molding	YES
Battery Type	M12™ Rechargeable REDLITHIUM™
Warranty	5 Years
Includes	2276-20 M12™ LASER TEMP-GUN™, (1) Thermocouple (K-Type), 48-11-2401 M12™ REDLITHIUM™ Battery, 48-59-2401 M12™ Lithium-ion Battery Charger, Carrying Case, Manual

NIST



Tool-only also available.

2276-20

NIST #: 2276-20NST



LASER TEMP-GUN™

M12™ Cordless Thermometer for HVAC/R

2277-21

NIST #: 2277-21NST

SPECIFICATIONS

HVAC KIT

Temperature Range	-22°F to 1472°F (-30°C to 800°C)
Basic Accuracy	1.50%
Distance to Spot Ratio	40 to 1
Contact Temperature	-40°F to 1022°F (-40°C to 550°C)
Display Resolution	0.1°F (0.1°C)
Response Time	<500 mS
Emissivity	Adjustable 0.10 to 1.00
MIN / MAX / AVG / DIF	YES
Data Storage	YES, 20 Points
Alarm (HI / LO)	YES
Locking Trigger	YES
Display Backlight	YES
Display Type	White on Black LCD
LED Flood Light	YES
Humidity Measurement	YES
Dew Point Measurement	YES
Rugged Over-Molding	YES
Battery Type	M12™ Rechargeable REDLITHIUM™
Warranty	5 Years
Includes	2277-20 M12™ LASER TEMP-GUN™ for HVAC/R, (1) Thermocouple (K-Type), (48-11-2401 M12™ REDLITHIUM™ Battery, 48-59-2401 M12™ Lithium-Ion Battery Charger, Carrying Case, Manual

NIST



Tool-only also available.

2277-20

NIST #: 2277-20NST





Nothing but **HEAVY DUTY.**

Contact Temp Meter

2270-20

NIST #: 2270-20NST

SPECIFICATIONS

Temperature Range	2,500°F to -328°F (1,372°C to -200°C)
Basic Accuracy	.1% of reading
Dual Temperature Input	YES
Display Resolution	0.1°F (0.1°C)
MAX / MIN / AVG	YES
Display Backlight	YES
Display Type	High-contrast White on Black
Rugged Over-Molding	YES
Warranty	5 Years
K-Type Thermocouple	YES
Display Values	T1, T2, T1-T2

Includes

- (1) Contact Temp Meter (2270-20), (3) AA Batteries,
- (2) K-Type Thermocouple,
- (1) Magnet Strap, Manual

NIST



Measures temperatures from 2500°F to -328°F (1372°C to -200°C) to cover most common applications

Magnet strap for hanging meter in all applications

Thermocouple input for contact temperature measurement

High-contrast, easy-to-read display provides clearer readings

Rugged over-molding for increased durability and grip

AA batteries included



Fluorescent Lamp & Ballast Tester

2210-20

SPECIFICATIONS

LAMP Test	T5, T8, T12
BALLAST Test	Electronic
PIN Test	Dual
Operating Temperature	-10°C to 50°C
Storage Temperature	-40°C to 60°C
Two Meter Drop Test	YES
Antenna Adapter	YES
Antenna Storage	Fully Retractable Inside Tool
Replaceable Antenna	YES
Battery Life	35 Hours
Auto Battery Off	Turns Off After 20 Minutes
Battery Type	Alkaline (AA)
Tool Warranty	5 Years

Includes Fluorescent Lamp & Ballast Tester, Soft Carry Case, Antenna Adapter, Manual, (4) AA Batteries



Removable antenna adapter
improves lamp test response

Built-in LED work light
illuminates dark work spaces

2.5' fully retractable antenna
for extended reach when testing

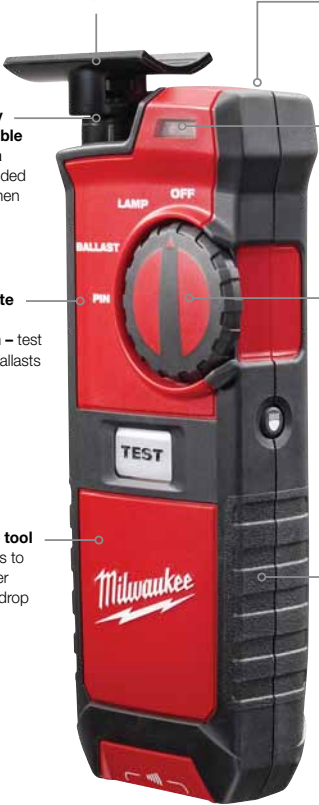
Visual and audible indicators
provide easy feedback

Complete 3-in-1 solution – test lamps, ballasts and pins

Dial and buttons
positioned for one-handed use

Durable tool
continues to work after 6.5 foot drop

Rugged over-molding
for increased durability and grip





Nothing but **HEAVY DUTY.**

M-SPECTOR™ AV M12™ Cordless Multimedia Camera Kit

17mm Digital
2311-21

9.5mm Analog
2312-21

SPECIFICATIONS

2311-21	17mm
Camera Head	Digital
2312-21	9.5mm
Camera Head	Analog
Cable Length	3'
LCD Display	3.5" LCD
Display Resolution	320 x 240
Brightness Control	4X LED
Zoom	4X
Image Rotation	YES
Audio Capability	YES
Photo Capability	3,800 Photos
Video Recording	45 Min
Run-Time	12 Hrs.

Includes 2311-20 M-SPECTOR™ Camera, 48-11-2401 M12™ REDLITHIUM™ Battery, 48-59-2401 M12™ Lithium-Ion Battery Charger, 3' Digital (17mm) Camera Cable, 2GB SD Card, USB Cable, Carrying Case



2GB SD card (included) records up to:

- 45 minutes audio and video
- 3,800 high resolution images



M-SPECTOR 360™ Rotating Inspection Scope

**9mm Digital
2313-21**

SPECIFICATIONS

Cable Length	3'
LCD Display	2.7"
High-Resolution Color Display Resolution	320 x 240
Image Sensor Resolution	640 x 480
LED Worklight	4 LED's, 5 Settings
Run-Time	12 Hrs.

Includes 2313-21 M-SPECTOR 360™ Kit, 48-11-2401 M12™ REDLITHIUM™ Battery, 48-59-2401 M12™ Lithium-ion Battery Charger, Carrying Case, Hook, Magnet and Mirror Attachments



**Tool-only also available.
2313-20**

Rotating screen – screen rotates providing the user fluid image control

Optimized 2.7" LCD – digital image and larger screen delivers crisp, clear image

9mm 640 x 480 digital image sensor – best in class image quality in tight spaces

Enhanced cable – improved durability and maneuverability

M12
Rechargeable REDLITHIUM™ battery pack provides power for unmatched performance

4 surround LED lights – best in class brightness without shadow or glare





Nothing but **HEAVY DUTY.**

M-SPECTOR 360™ 9 ft Rotating Inspection Scope Kit

**9mm Digital
2314-21**

SPECIFICATIONS

Cable Length	9'
LCD Display	2.7" High-Resolution Color
Display Resolution	320 x 240
Image Sensor	640 x 480
Pixel Density	
LED Worklight	4 LED's, 5 Settings
Run-Time	12 Hrs.

Includes

2314-21 M-SPECTOR 360™ Kit, 48-11-2401 M12™ REDLITHIUM™ Battery, 48-59-2401 M12™ Lithium-ion Battery Charger, Carrying Case, Hook Magnet and Mirror Attachments, Plumbing Ball Attachment



Rotating screen – screen rotates providing the user fluid image control

Optimized 2.7" LCD – digital image and larger screen delivers crisp, clear image

Enhanced cable – improved durability and maneuverability

9mm 640 x 480 digital image sensor – best in class image quality in tight spaces

M12

Rechargeable REDLITHIUM™ battery pack provides power for unmatched performance

4 surround LED lights – best in class brightness without shadow or glare



SUB-SCANNER™ M12™ Cordless Detection Tool Kit 2291-21

SPECIFICATIONS

Max Scanning Depth	
Stud Mode	1.5"
Metal Mode	6"
Measurement Accuracy	
Stud Center	0.25"
Metal Center	0.5"
Specifications	
Auto Calibration	YES
Battery Type	M12™ Rechargeable REDLITHIUM™
Warranty	5 Years
Includes	2291-20 SUB-SCANNER™ M12™ Detection Tool, 48-11-2401 M12™ REDLITHIUM™ Battery, 48-59-2401 M12™ Lithium-ion Battery Charger, Carrying Case, Manual



Tool-only also available.
2291-20

Four wheel design
for durability and
smooth, accurate
measurement

**Detects metal and
wood** by scanning
into concrete, drywall,
wood and metal

Detects rebar up to
6" deep in concrete

**High-contrast,
easy-to-read
display** provides
clearer readings

**Rugged
over-molding**
for increased
durability and grip

**Ergonomic
handle position**
for ease of use



**Rechargeable
REDLITHIUM™
battery pack**
provides power
for unmatched
performance





Nothing but **HEAVY DUTY.**

Laser Distance Meter

2280-20

SPECIFICATIONS

Basic Accuracy	$\pm 0.059"$ (± 1.5 mm)
Distance Range	0.16' (0.05m) to 197' (60m)
Arithmetic Functions	YES
6 Measure Functions	Length, Area, Volume, Indirect Measurement (Pythagoras), Stake Out, Timer

Includes (2) AAA Batteries, Carrying Case, Manual



Easy-to-read display with backlight

Six different measurement functions

Memory recall up to 10 measurements

Easily add and subtract distance values

End bracket for measuring from edges and corners



M-SPECTOR™ Accessories

For use with:

- M-SPECTOR™ Digital Inspection Camera Kit (2300-20)



**M-SPECTOR™ (17mm)
3' Replacement
Digital Camera Cable**
48-53-0115



**M-SPECTOR™
3' Extension Cable (17mm)**
48-53-0110

M-SPECTOR™ AV Accessories

For use with:

- M-SPECTOR™ AV M12™ Cordless Multimedia Camera Kit (17mm) (2311-21)
- M-SPECTOR™ AV M12™ Cordless Multimedia Camera Kit (9.5mm) (2312-21)



**M-SPECTOR™ AV (17mm)
3' Replacement
Digital Camera Cable**
48-53-0125



**M-SPECTOR™ AV (9.5mm)
3' Replacement
Analog Camera Cable**
48-53-0130



**M-SPECTOR™ AV (17mm) 8'
Extension Cable**
48-53-0140



**M-SPECTOR™ AV (17mm)
3' Extension Cable**
48-53-0141

M-SPECTOR™ 360 Accessories

For use with:

- Milwaukee Models 23-13-20, 2313-21 and 2314-21



**M-SPECTOR 360™
Scope Head Attachment Set**
48-53-0112



**M-SPECTOR 360™
Pipe Guide Attachment**
48-53-0113

Accessory Cases



**Rollup
Accessory Case**
48-55-0165



**Zippered
Accessory Case**
48-55-0170



Rollup Accessory Case **SPECIFICATIONS**

Material	Nylon
Velcro	YES
Inside Compartments	4 Pockets with Velcro
Strap for Hanging	YES
Warranty	1 Year



Zippered Accessory Case **SPECIFICATIONS**

Material	Nylon
Zippered	YES
Inside Pocket	YES
Strap for Hanging	YES
Warranty	1 Year



Meter Cases



Meter Case
48-55-0175



Large Meter Case
48-55-0180



Meter Case **SPECIFICATIONS**

Material	Nylon
Zippered	YES
Inside Pocket	YES
Strap for Hanging	YES
Warranty	1 Year



Large Meter Case **SPECIFICATIONS**

Material	Nylon
Zippered	YES
Inside Pocket	YES
Strap for Hanging	YES
Warranty	1 Year



Electrical Accessories



Electrical Test Lead Set
49-77-1001

Electrical Test Lead Set
SPECIFICATIONS

Maximum Voltage	1000V
Maximum Current	10A
Safety Rating	CAT IV 600V / CAT III 1000V
Overmold Material	PVC
Length	55 inches (1.4 meter)
Warranty	1 Year



Electrical Test Leads
49-77-1003

Electrical Test Leads
SPECIFICATIONS

Maximum Voltage	1000V
Maximum Current	10A
Safety Rating	CAT IV 600V / CAT III 1000V
Overmold Material	PVC
Length	39 inches (1.0 meter)
Warranty	1 Year



Electrical Test Probes
49-77-1004

Electrical Test Probes
SPECIFICATIONS

Maximum Voltage	1000V
Maximum Current	10A
Safety Rating	CAT IV 600V / CAT III 1000V
Overmold Material	PVC
Probe Metal Used	Stainless Steel
Warranty	1 Year



Electrical Alligator Clips
49-77-1005

Electrical Alligator Clips
SPECIFICATIONS

Maximum Voltage	1000V
Maximum Current	10A
Safety Rating	CAT IV 600V / CAT III 1000V
Overmold Material	PVC
Probe Metal Used	Stainless Steel
Warranty	1 Year



Temperature Accessories



Thermocouple (Dual Banana)
49-77-2001



Thermocouple (K-Type)
49-77-2002

Thermocouple (Dual Banana and K-Type)
SPECIFICATIONS

Temperature Range	-40°F to 500°F (-40°C to 260°C)
Temperature Accuracy	2.5%
Overmold Material	Teflon
Length	39 inches (1.0 meter)
Warranty	1 Year





Nothing but **HEAVY DUTY.**

Hand Tools

10IN1 Ratchet ECX™ Multi-Bit Driver

48-22-2301



Power
Groove
Bits



Extended
Reach

10IN1 SAE Hex Key Driver

48-22-2104



Power
Groove
Bits



Wire
Stripper

4 Pc SAE Hollow Shaft Nut Driver Set

48-22-2404



Drives
Square
Fasteners



3" Hollow
Shaft

2 Pc Steel Cap Demolition Screwdriver Set

48-22-2002



Compression
Forged Tips



High Impact
Metal Core

6IN1 Combination Pliers

48-22-3069



Pliers



Wire
Cutter

6IN1 Lineman's Pliers

48-22-3309



Pliers



Fish Tape
Puller

3 Pc 1000V Insulated Screwdriver Set

48-22-2202



Slim Drive
Shaft



Dual Layer
Insulation

Quick Adjust Reaming Pliers

48-22-3110



Quick Adjust



Reaming
Head

FACTORY SERVICE CENTERS

Atlanta

6155 Jimmy Carter Blvd
Suite F2
Norcross, GA 30071

Boston

375 University Avenue
Westwood, MA 02090

Chicago

6310 Gross Point Road
Niles, IL 60714

Cleveland

8200 Sweet Valley Drive
Valley View, OH 44125

Dallas

2701 W Airport Freeway
Unit 110
Irving, TX 75062

Denver

2500 W 8th Avenue, Unit E
Denver, CO 80204

Houston

3566 West T.C. Jester Blvd
Houston, TX 77018

Las Vegas

5580 S Decatur Blvd
Unit 110
Las Vegas, NV 89118

Miami

3311 NW 82nd Avenue
Miami, FL 33122

Minneapolis/St. Paul

9705 Valley View Road
Eden Prairie, MN 55344

Milwaukee

13145 W Lisbon Road
Brookfield, WI 53005

New York City

3068 Whitestone Expressway
Flushing, NY 11354

Philadelphia

821 W Sproul Road
Springfield, PA 19064

San Antonio

14329 San Pedro Avenue Suite D
San Antonio, TX 78232

San Diego

8252 Clairmont Mesa Blvd Unit D
San Diego, CA 92111

San Francisco/Oakland

41601 Albrea Street
Fremont, CA 94538

Seattle

18939 120th Avenue NE
Suite 111
Bothell, WA 98011

Washington D.C.

11712 Baltimore Avenue
Beltsville, MD 20705

CANADA

Edmonton

18129 111 Avenue NW
Edmonton, AB T5S 2P2

Toronto

140 Fernstaff Court, Unit 4
Vaughan, ON L4K 3L8

1-800-SAWDUST (1-800-729-3878)



Nothing but **HEAVY DUTY.**